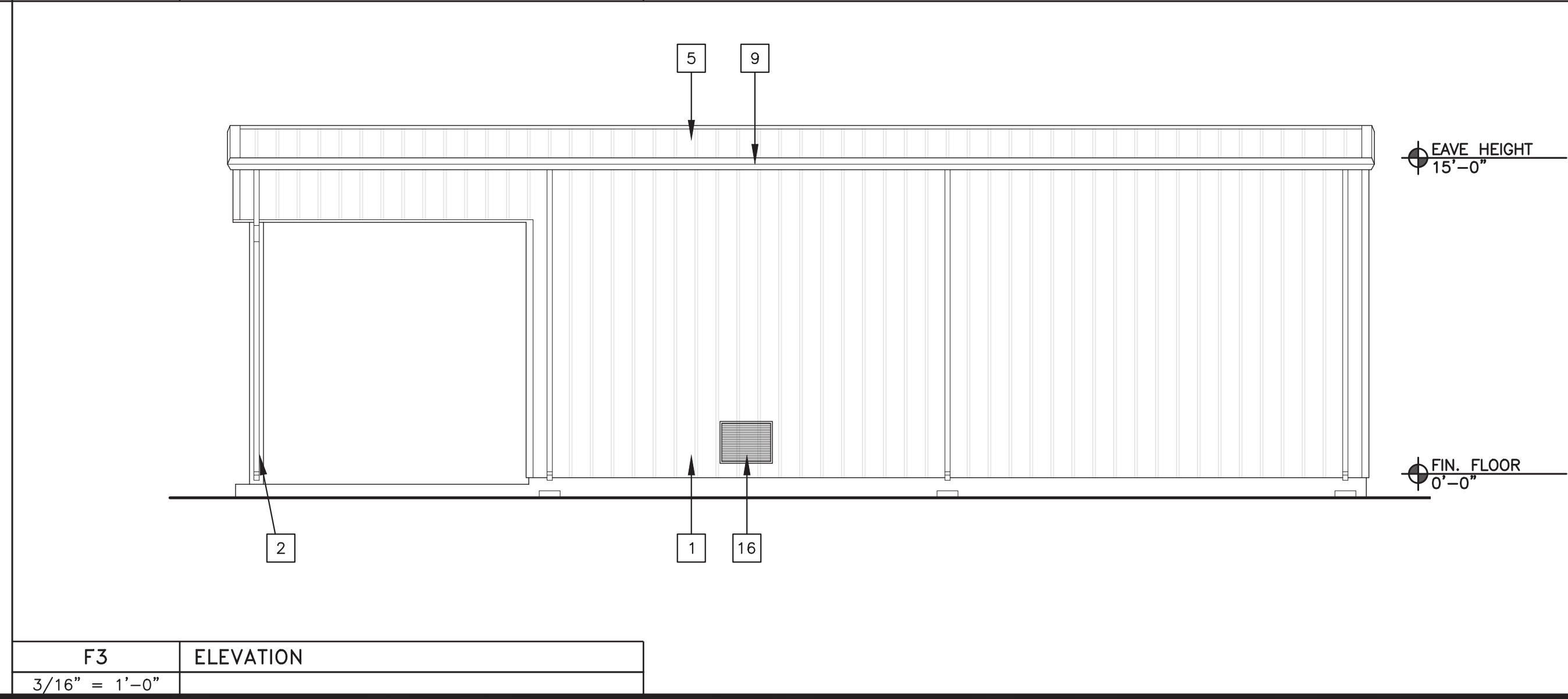
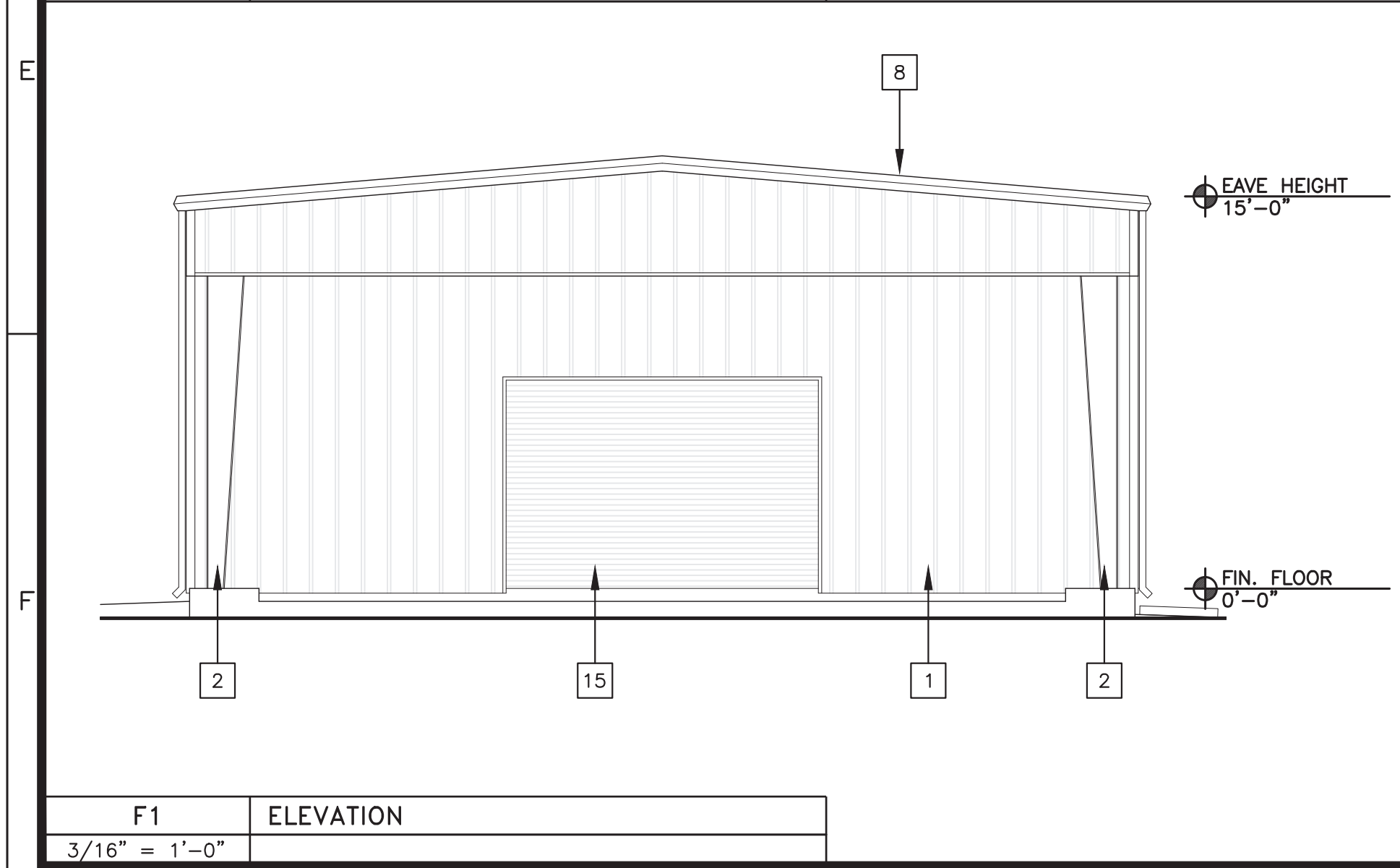
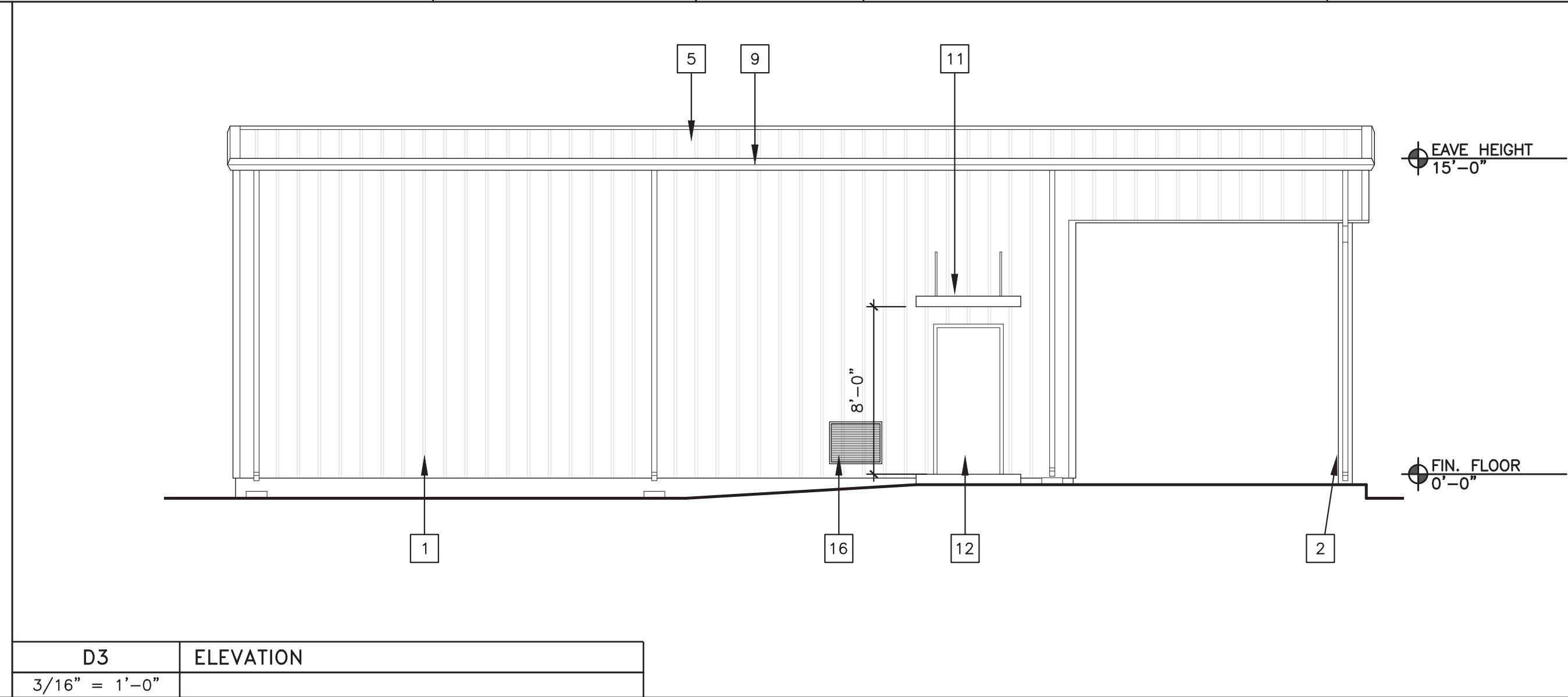
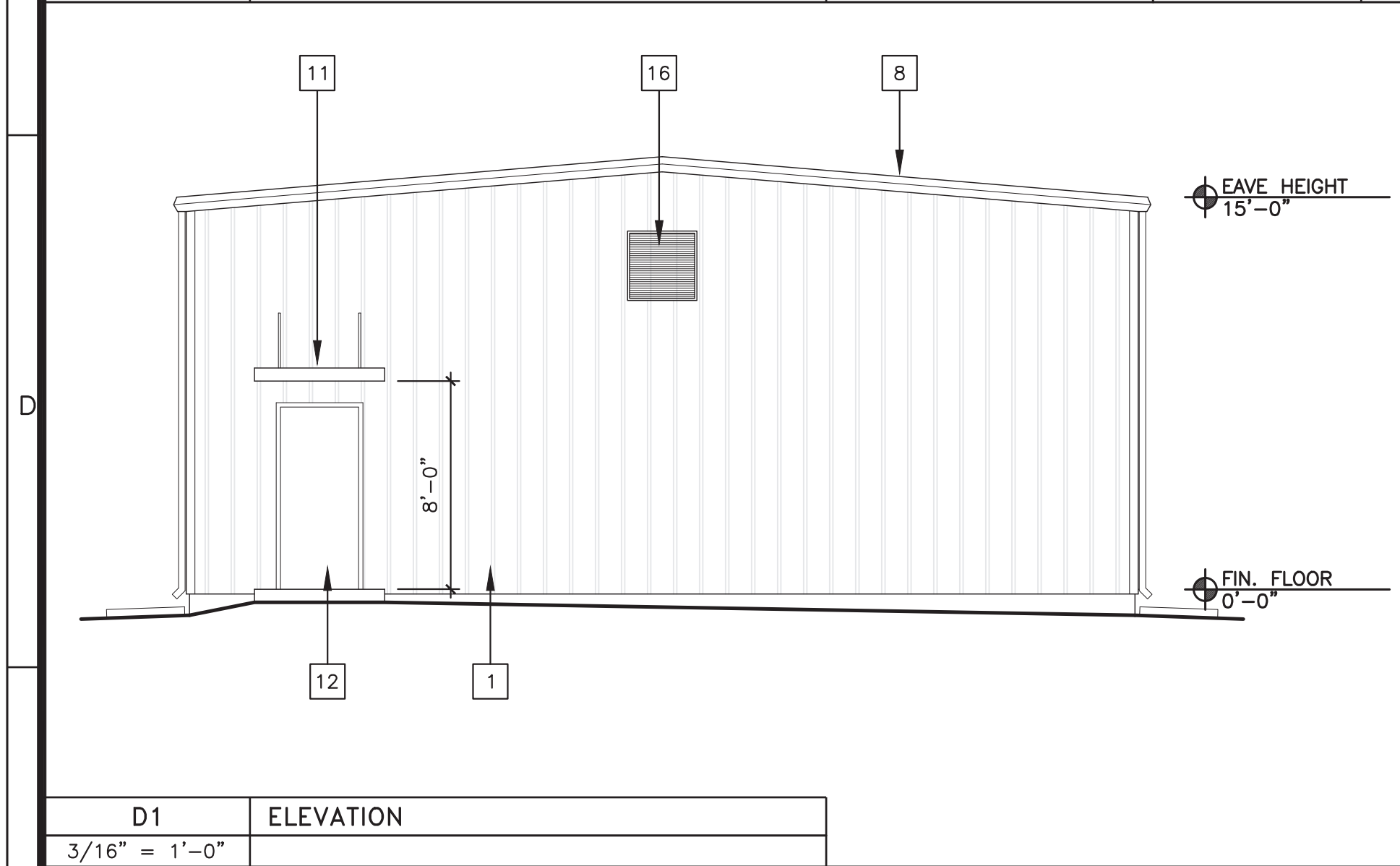
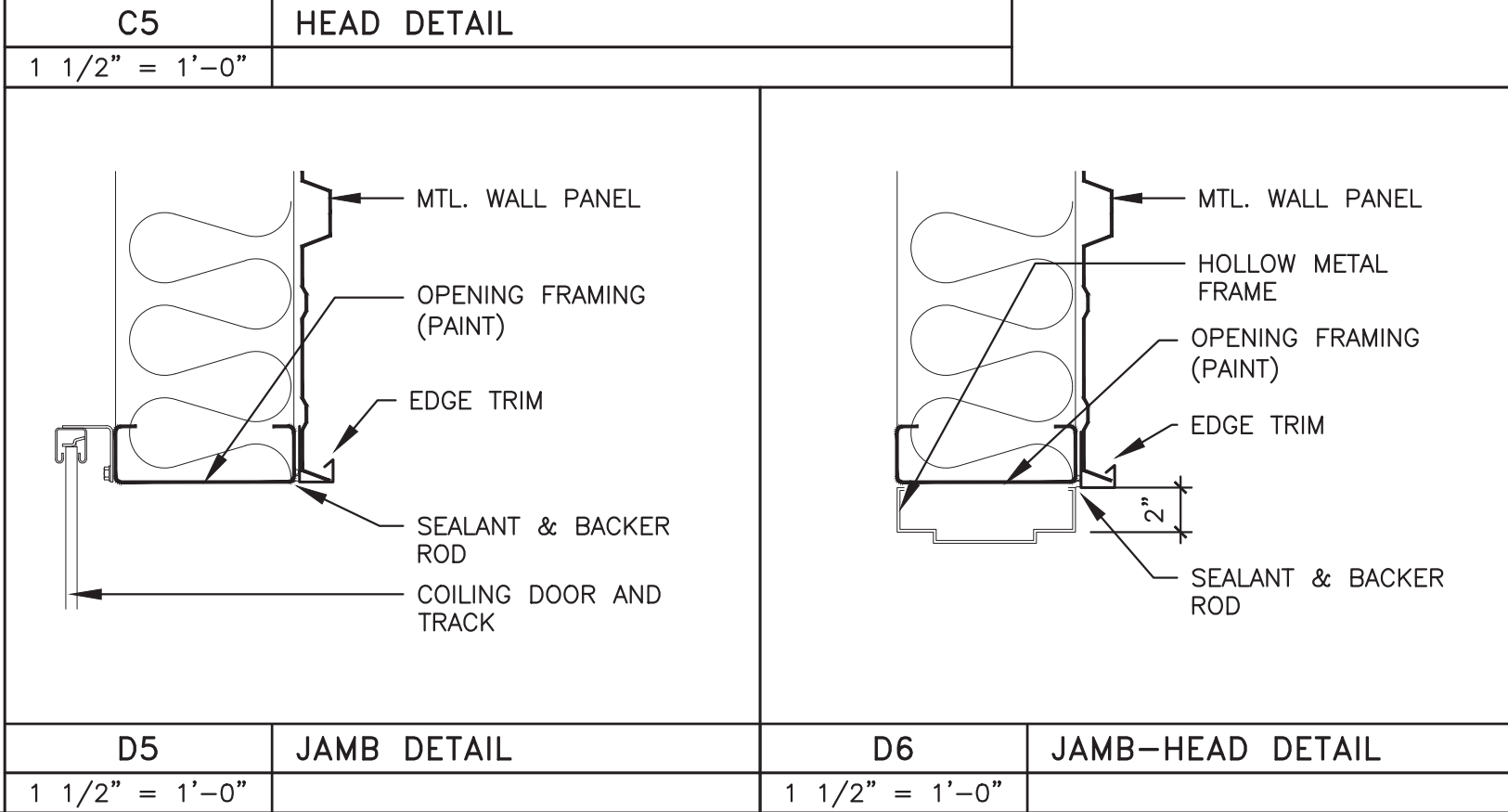
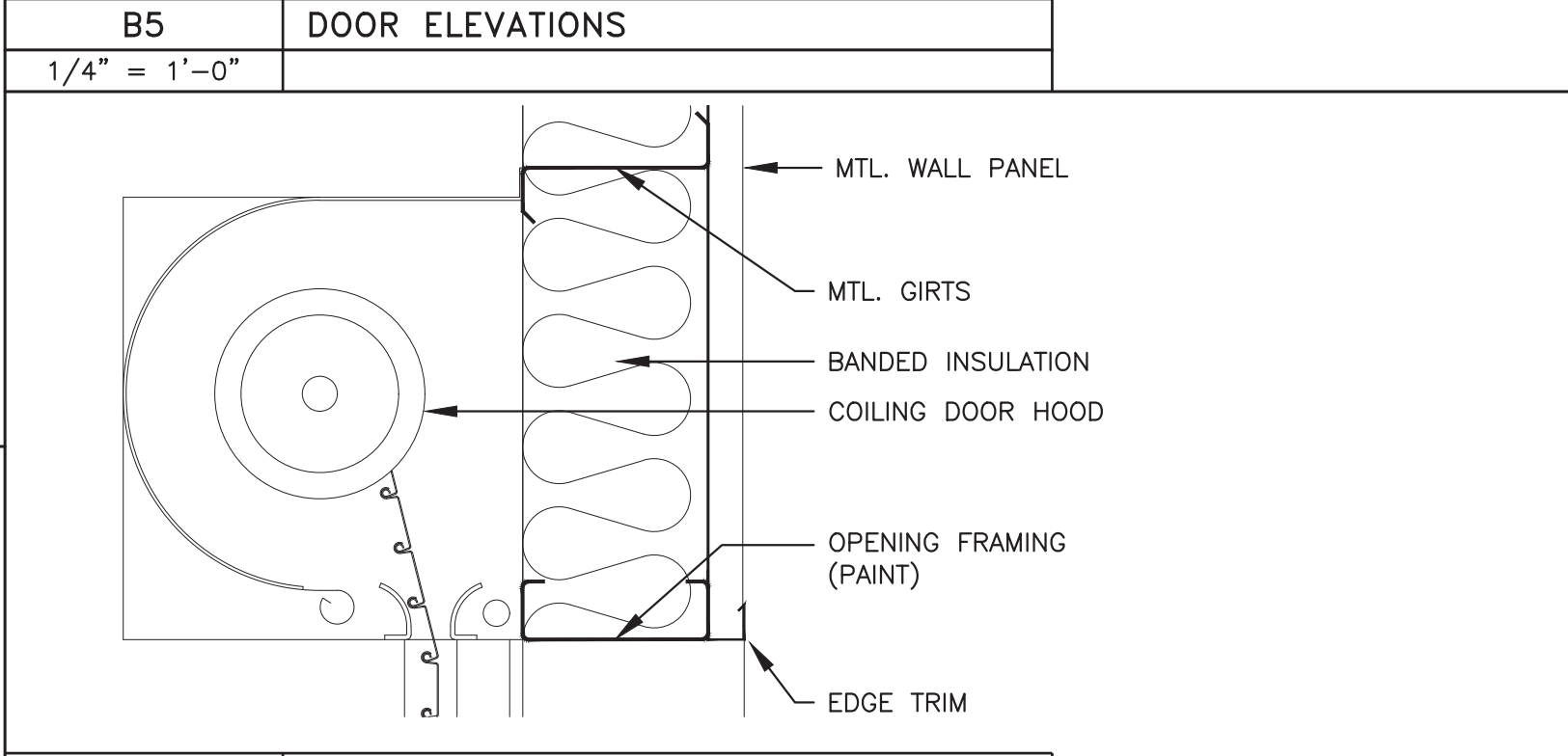
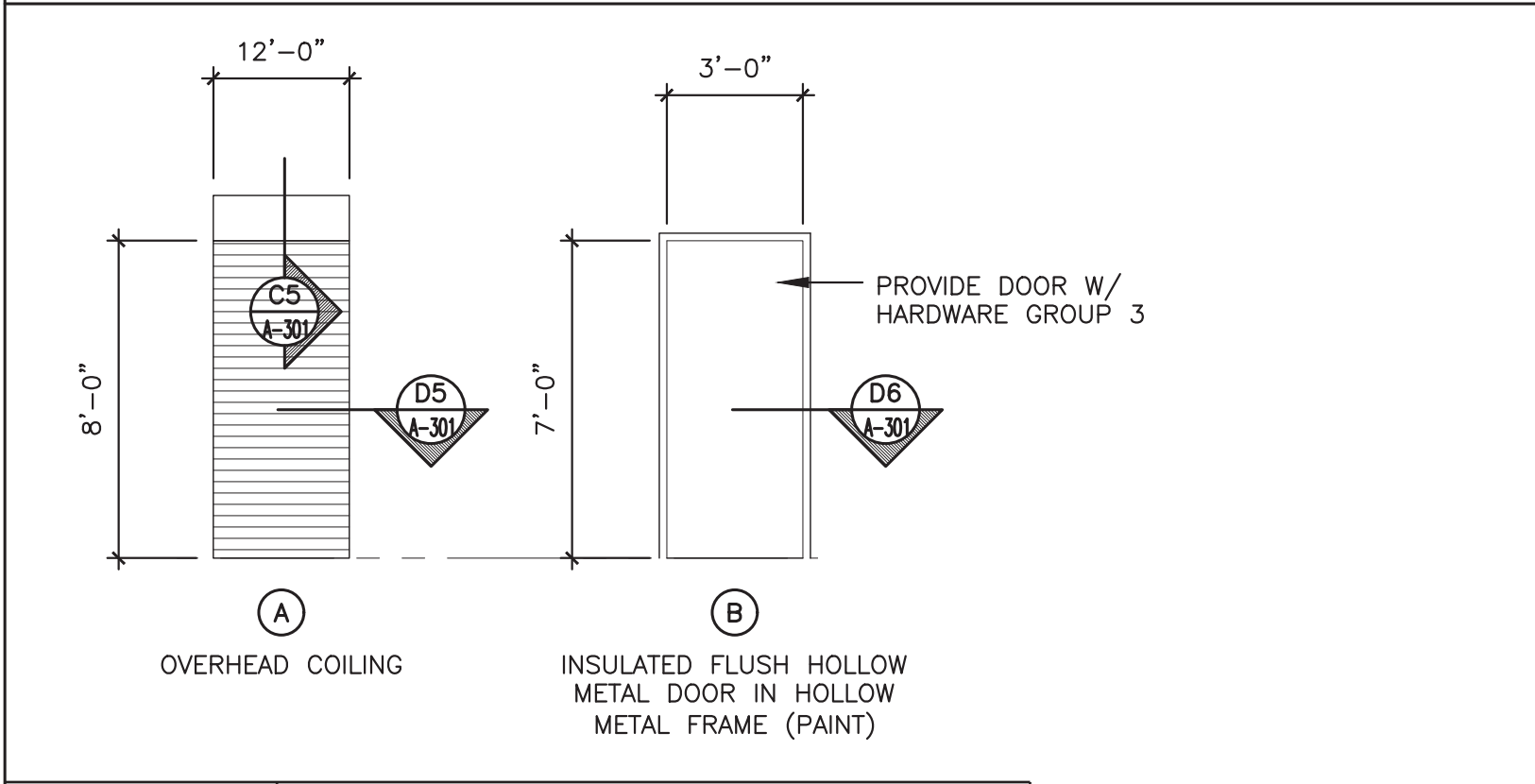


- KEYED NOTES:**
1. PRE-FIN. MTL. WALL PANEL
  2. PRE-ENGINEERED MTL. BLDG MAIN FRAME (PAINT)
  3. PRE-ENGINEERED MTL. BLDG GIRTS (PAINT)
  4. PRE-ENGINEERED MTL. BLDG PURLINS (PAINT)
  5. PRE-FIN. MTL. ROOF PANEL
  6. 5'-0"x5'-0" CONC. LANDING - 4" THICK
  7. EXPOSED MTL. BLDG. INSULATION
  8. PRE-FIN. MTL. RAKE TRIM
  9. PRE-FIN. MTL. GUTTER
  10. PRE-FIN. MTL. DOWNSPOUT
  11. PRE-FIN. MTL. AWNING
  12. DOOR - DOOR ELEVATION "B"
  13. MTL. WALL PANEL AND GIRT ABOVE
  14. LIGHT - SEE ELEC.
  15. OVERHEAD DOOR - SEE DOOR ELEVATION "A"
  16. LOUVER - SEE MECH



## CODE ANALYSIS

**APPLICABLE CODES:**

- 2015 LIFE SAFETY CODE NFPA 101
- 2021 INTERNATIONAL BUILDING CODE
- 2020 INTERNATIONAL ELECTRICAL CODE
- 2021 INTERNATIONAL MECHANICAL CODE
- 2021 INTERNATIONAL PLUMBING CODE
- 2010 ADAAG
- 2021 ANSI STANDARD 90.1 ENERGY CODE

**OCCUPANCY:**

S-1 STORAGE - 1,962 SQFT

**TYPE OF CONSTRUCTION:**

IIB (I1000)

**HEIGHT AND AREA LIMITATIONS:**

ALLOWABLE

- AREA - 70,000 SQFT
- HEIGHT - 2 STORY 55'-0"

ACTUAL

- AREA - 1,962 SQFT
- HEIGHT - 1 STORY 20'-0"

**FIRE RESISTANCE RATING:**

- STRUCTURAL ELEMENTS - NOT REQUIRED
- EXTERIOR WALLS - NOT REQUIRED

**OCCUPANCY LOAD:**

STORAGE - 19,62 SQFT / 300 GROSS = 7

**EGRESS REQUIREMENTS:**

REQUIRED - 7 x 0.15 = 1.05"

PROVIDED - 2) SINGLE 36" WIDE DOORS

**AUTOMATIC FIRE SUPPRESSION:**

NONE

**FIRE ALARM:**

NONE